

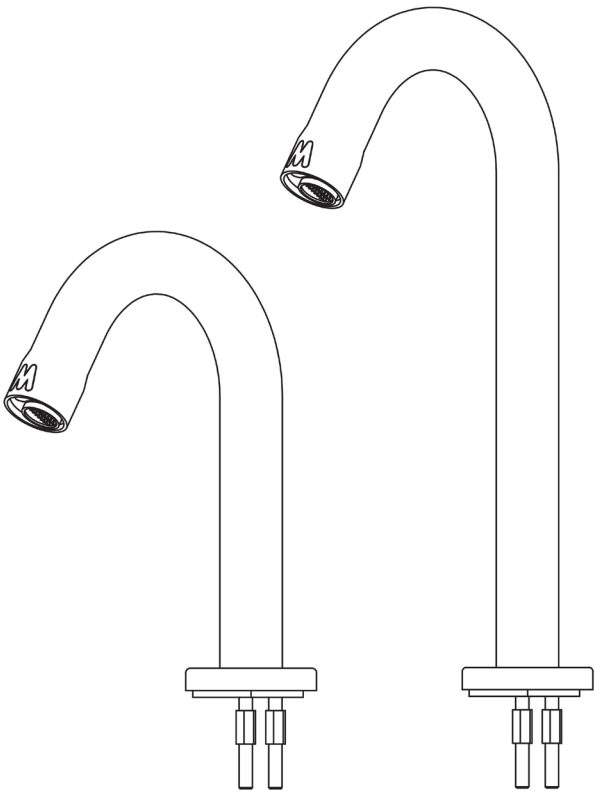
INSTALLATION & OPERATING MANUAL

MODELS: TX-i-200 / TX-i-300



CONTENTS:

Chapter	Description	Page
1.	Introduction	1
2.	Ratings and Specifications	2
3.	Product Safety	3
4.	Structure	5
5.	INSTALLATION INSTRUCTIONS	6
6.	OPERATING INSTRUCTIONS	8
7.	After Sales and Service Support	8
8.	Warranty	8



Chapter 1. INTRODUCTION

Thank you for purchasing Mechline’s AquaTechnix TX-i intelligent sensor tap. When correctly installed, and operated in accordance with this Operator Manual, this tap will provide many years of service.

Designed with the most advanced electronics on the market, Mechline’s intelligent TX-i boasts a whole host of benefits including a **super-smart instant shut-off valve**, **extended battery** life, and **enhanced anti-bacterial properties**.

The TX-i offers **supreme water-savings** alongside huge hygiene benefits. Its **durable, low-maintenance design** makes it an essential addition to busy commercial kitchens and other high-traffic or hygiene-critical environments, providing **long-lasting, hands-free performance** in demanding settings.

Chapter 2. RATINGS and SPECIFICATIONS

Model numbers	TX-i-200	TX-i-300
Region	UK/International	
Spout height	200mm	300mm
Water Pressure Range	0.5-8 bar (recommended 3 bar)	
Flow Rate Range	Between 3.78 LPM (0.063 LPS) and 8 LPM (0.133 LPS) pressure dependent	
Operating Temperature	1 to 70°C	
Voltage Nominal	DC6.0V	
Power Supply	Battery pack: 4x standard AA (not supplied)	
Long-life Battery	Up to 5 years, or 365,000 cycles	
Basket Microfilter	MUST BE FITTED	
Mounting Options	Deck-mounted	
Hose	M8 to 1/2" BSP / 400mm	M8 to 1/2" BSP / 500mm
Supply Connection	1/2" BSP	
Hole Size Required	32-42mm	
Sensor Type	Time-of-Flight sensor technology	
Sensor IP Rating	IP67 (dust-tight and waterproof)	
Temperature Control	Cold or Premixed water	
Auto-water Flush	Every 24 hours	
Material/Finish	High-strength tubular 316L stainless steel / Satin	
Material Certification	ACS WRAS KTW / W270 NSF WATERMARK CE RoHs, REACH UKCA	



Chapter 3. PRODUCT SAFETY

3.1 GENERAL ADVICE

To ensure optimum performance of your battery-operated sensor tap, follow these guidelines:

- 3.1.1 Inspect the product for damage carefully before installation. No claims for damage can be accepted after installation.
- 3.1.2 **Ensure all pipework is flushed free of debris before installation.**
- 3.1.3 Always fit a service valve to the hot & cold supplies.
- 3.1.4 If flexible hoses are used, ensure they are not kinked, twisted or crushed during installation.
- 3.1.5 Ensure supply pipes are properly sized to avoid problems with flow rate, pressure loss or water hammer.
- 3.1.6 Protect the installation with water filters, water-hammer arrestors and water pressure reducers as required.
- 3.1.7 Do not install the products where there is the possibility of the water supplies freezing.
- 3.1.8 When installing batteries, make sure they are inserted correctly, observing the proper polarity ('+' positive and '-' negative). Use only alkaline batteries of good quality. Keep the battery compartment and connections dry, and avoid immersing the tap or battery box in water.
- 3.1.9 When replacing batteries, disconnect the power supply and wait for 5 minutes before reconnecting to reset the sensor. Dispose of batteries properly; do not dispose of them in fire, as this may cause an explosion. Handle batteries with care and do not disassemble, crush, puncture, or otherwise damage them.
- 3.1.10 Clean the tap gently using a damp towel or cotton cloth, avoiding rocking or violent motions.

3.2 SYMBOLS

MEANING/DESCRIPTION	SYMBOL
Warning/Caution An appropriate safety instruction should be followed or caution applied to a potential hazard.	
Refer to Manual Refer to the relevant instructions detailed within the product manual.	

Before operating the unit, read these instructions carefully. Correct installation and operation will provide optimum performance and a longer life for this high-quality sensor tap.

3.3 SAFETY INSTRUCTIONS

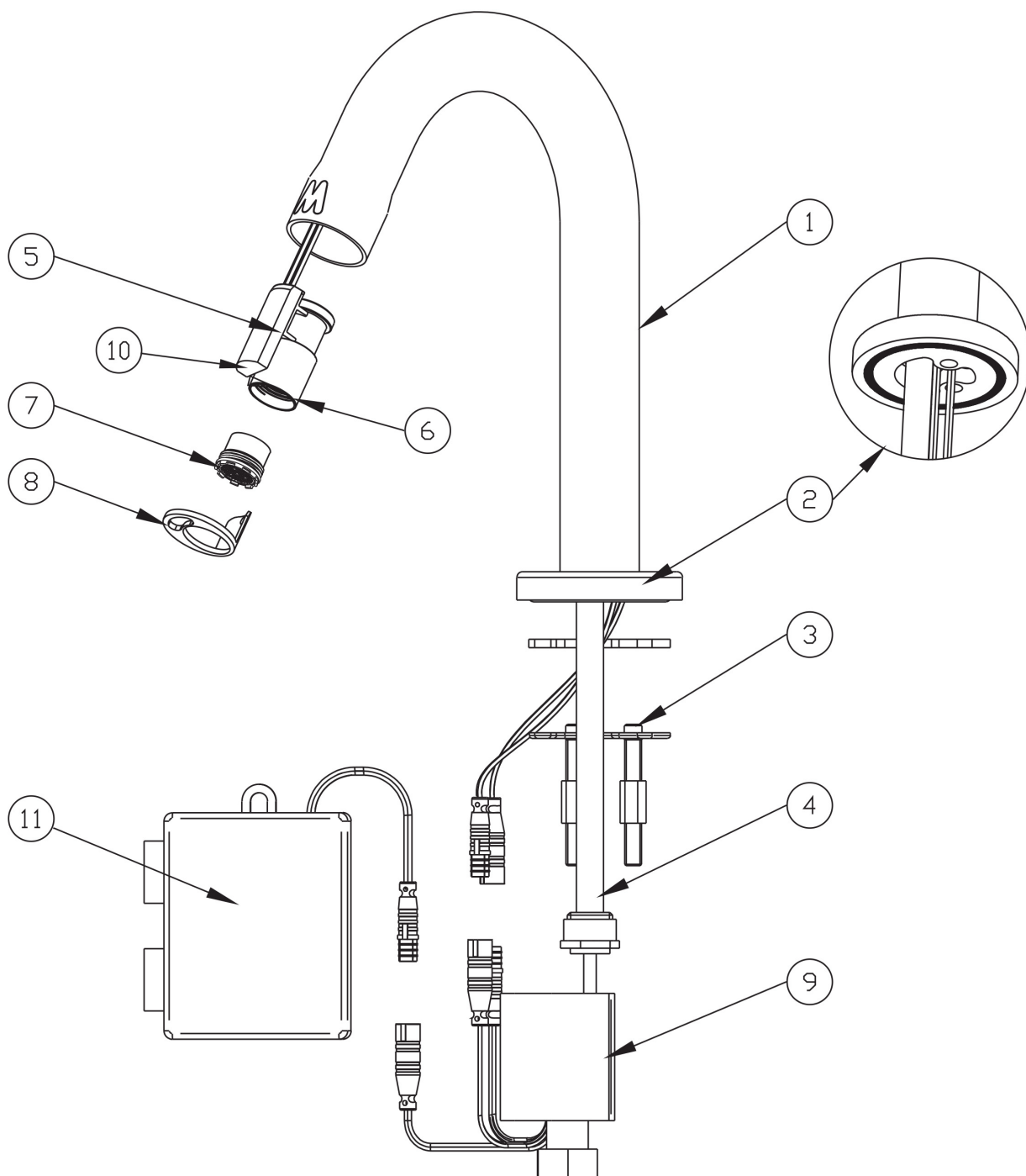
- 3.3.1 Ensure the unit is installed, operated and maintained by trained and authorised personnel.
- 3.3.2 Children should not be allowed to play with the unit.
- 3.3.3 Prevent short circuits by avoiding contact between metal objects and the battery terminals. Keep batteries away from children, as they can be harmful if swallowed. If a child ingests a battery, consult a physician immediately.
- 3.3.4 The unit should be used as provided and not be altered or tampered with as the safety of the unit may be compromised.
- 3.3.5 Before attempting servicing or maintenance tasks, the unit **MUST** be isolated from the power source and disconnected.
- 3.3.6 Should a fault occur with the unit, immediately isolate and disconnect from the power source.
- 3.3.7 Ensure safe storage/positioning of the electrical cabling when not in use. Should the electrical cable become damaged at any time, do **NOT** operate the unit.
- 3.3.8 Do not use the unit outdoors where it can be exposed to moisture.
- 3.3.9 Keep the unit away from hot surfaces.
- 3.3.10 Do not use the unit where combustible gases or vapours may be present.

3.4 PRODUCT CONFORMITY

- 3.4.1 **Sensor:** Low Voltage Directive (LVD) 2014/35/EU, Electromagnetic Compatibility Directive (EMC) 2014/30/EU, IP 67.
- 3.4.2 Mechline's TX-i sensor tap is supplied to the marketplace having been produced under the control of our comprehensive BSI ISO 9001:2015 Quality Management System (certificate FS 616985) and BSI ISO 14001:2015 Environmental Management (certificate EMS 801683).

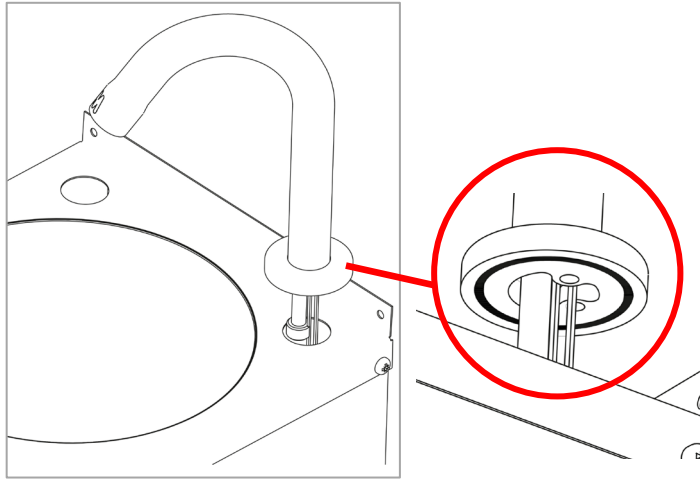
Chapter 4. STRUCTURE

1	Spout	6	Diffuser casing
2	Flange with O-ring	7	Diffuser
3	Tap fixing kit	8	Protection mask
4	Stainless steel hose M8 to 1/2" BSP / PEX lined / WRAS	9	Microvalve
5	Sensor and wiring (1000±30 mm)	10	Red LED
		11	Battery pack 4x AA batteries

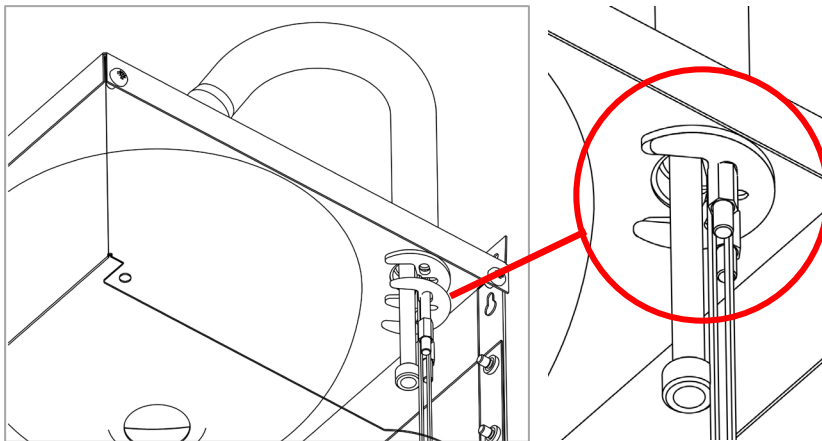


Chapter 5. INSTALLATION INSTRUCTIONS

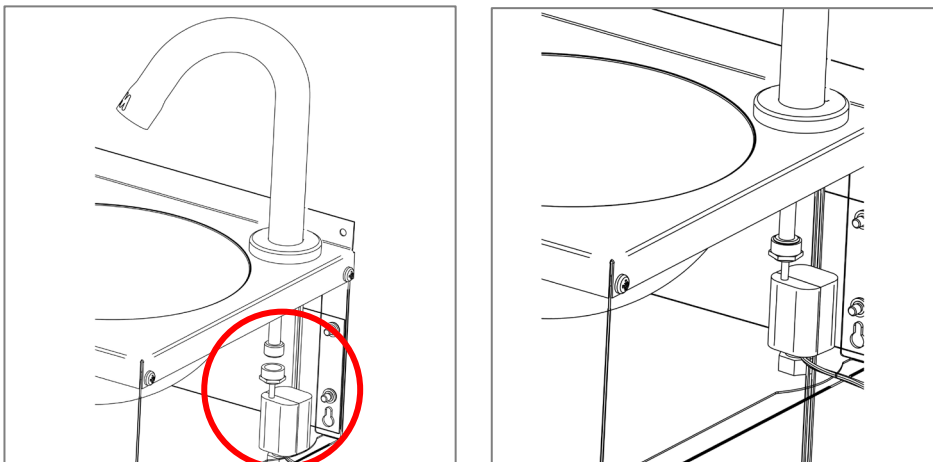
- 5.1 **Equipment needed:** Spanner and 4 x AA batteries.
- 5.2 Position the tap on the basin. Carefully push the wiring and hose through the basin hole. Ensure the O-ring is correctly positioned within the flange channel before proceeding.



- 5.3 Install the tap fixing kit from beneath the basin. Tighten the nuts using a 9mm spanner. **IMPORTANT: Do not overtighten.**



- 5.4 Connect the microvalve to the hose coming out of the tap. **IMPORTANT: Do not overtighten.**

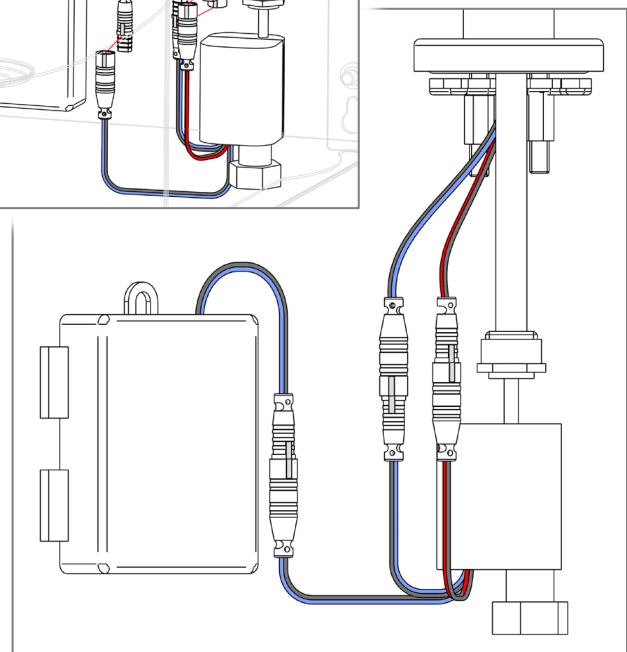
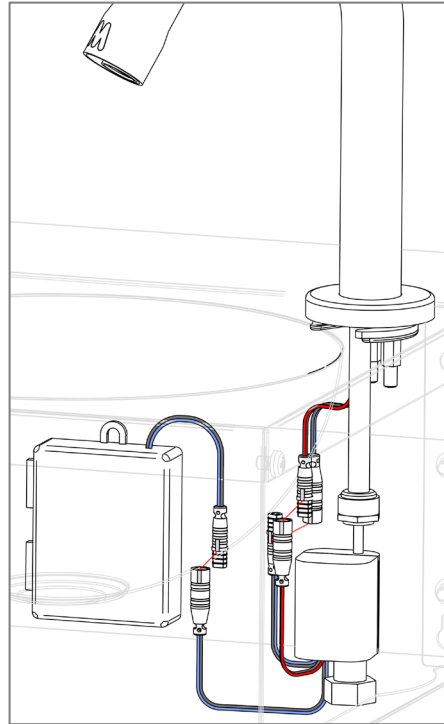
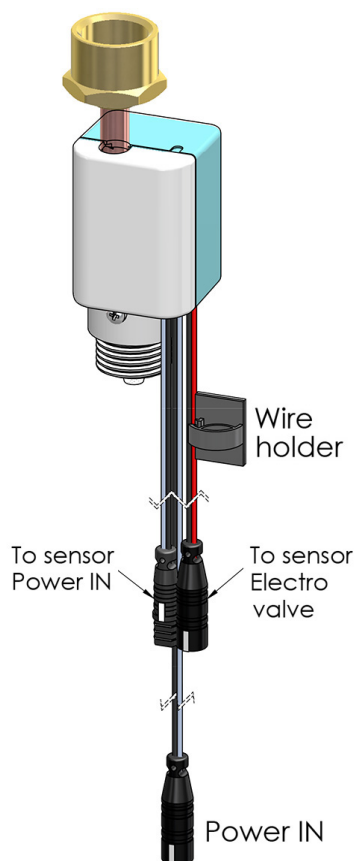


Continued...

5.5 Connecting the Wiring:

- 5.5.1 **Locate the Wiring:** Identify the microvalve wiring, battery pack wiring, and sensor wiring.
- 5.5.2 **Refer to Illustration:** Consult the diagram provided below for correct wiring connections.
- 5.5.3 **Connect Microvalve to Battery Pack:** Join the microvalve wiring to the corresponding battery pack wiring.
- 5.5.4 **Connect Microvalve to Sensor:** Attach the microvalve wiring to the appropriate sensor wiring.

NOTE: Follow the colour coding/labelling on the wires for accurate connections.
If in doubt, contact technical@mechline.com



- 5.6 Place 4x standard AA batteries (not supplied) into the battery pack and secure accordingly.
- 5.7 When installing batteries, make sure they are inserted correctly, observing the proper polarity ('+' positive and '-' negative). Use only alkaline batteries of good quality. Keep the battery compartment and connections dry, and avoid immersing the tap or battery box in water.
- 5.8 **Verify Connections:** Ensure all connections are secure and match the illustration. Observe red flashing LED at the end of the spout to signify correct connection.
- 5.9 The Sensor tap is ready to be connected to mains water supply. This can use a standard mixer valve or a thermostatic valve and a 1/2" BSP Male to Female stainless steel PEX lined hose. **Ensure all pipework is flushed free of debris before installation.**

Chapter 6. OPERATING INSTRUCTIONS

6.1 The TX-i sensor tap is very easy to operate. Simply place your hands within the sensor's detection zone, 5 to 16 cm below the spout. The tap will automatically turn on and off as you pass your hand through the activation zone.

6.2 ON GOING REQUIREMENTS

6.2.1 4x AA battery replacements – up to 5 years, or 365,000 cycles.

NOTE: *When batteries need to be replaced, the end of the spout will flash as an indicator.*

6.2.2 Keep your TX-i sensor tap in good condition by cleaning gently with mild soapy water using a damp towel or cotton cloth, avoiding rocking or violent motions. Do not use abrasive, chlorine or any other acid-based cleaning products.

Chapter 7. AFTER SALES and SERVICE SUPPORT

For warranty or spare parts contact technical@mechline.com.

Chapter 8. WARRANTY

Unless otherwise stated, all products carry a warranty of twenty-four (24) months against manufacturing defect or workmanship on parts with no inclusion for labour or site attendance.



MECHLINE DEVELOPMENTS LIMITED | Telephone: +44 (0)1908 261511 | Email: info@mechline.com | Web: www.mechline.com