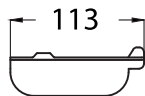
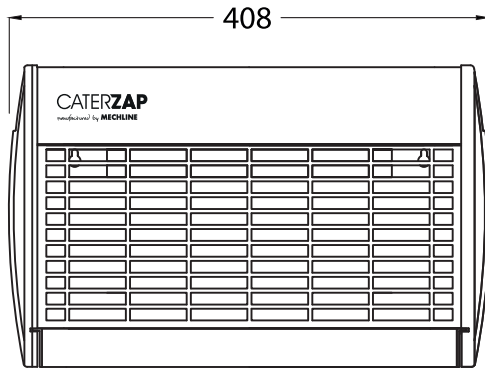


**LEFT**

ELECTRICAL CONNECTION →

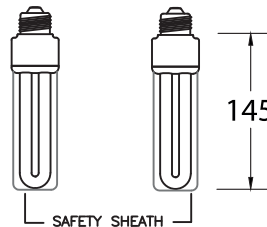


SLIDE-OUT INSECT TRAY  
C/W SAFETY INTERLOCK  
TO BE SMOOTH FIT INTO  
FLY KILLER BODY.

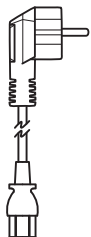


**FRONT**

2 X 13W E27



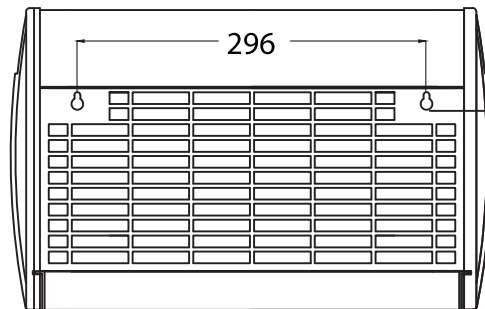
SAFETY SHEATH



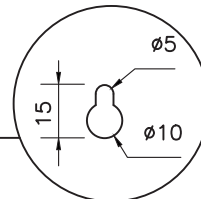
SCHUKO 2 PIN PLUG  
C/W 3 AMP REMOVABLE FUSE.  
1000mm FLEX.



HANGING CHAIN (SUPPLIED LOOSE)  
430MM LONG C/W 2 X CLIPS



**REAR**



WALL MOUNTING  
KEY HOLES X 2