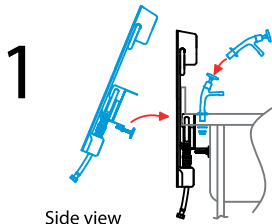
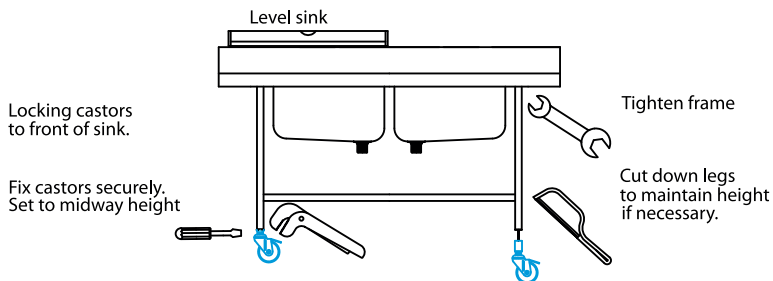
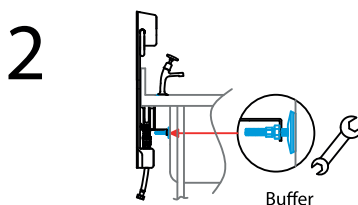


QUICKLINK

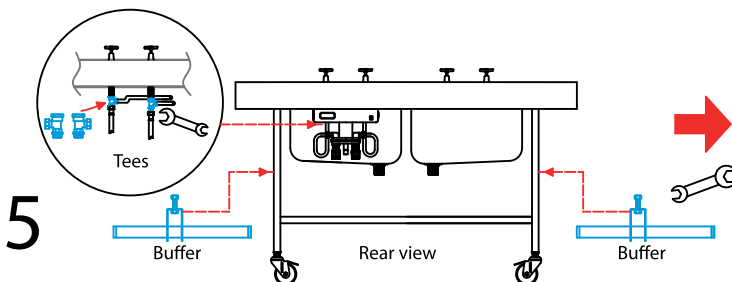
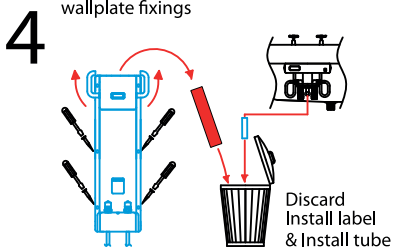
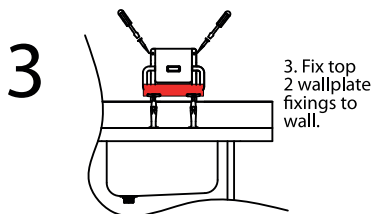
QuickLink S / Series 4 INSTALL INSTRUCTIONS



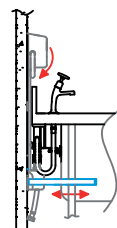
1. Fit sink bracket and wallplate to sink. Use tap spanner on tap backnuts to lock in place.



2. Lock buffer against sink bowl.



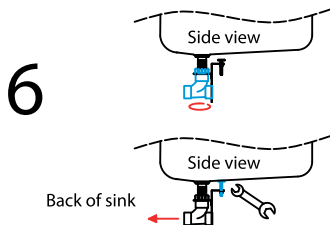
5. Connect water hoses to tap tails. Fit supplied tees between tap tails and water hoses to branch off to other taps if required. Fit 2x buffers to sink legs. Connect sink to wallplate and set buffers against the wall as shown.



QuickLink S Drain Kit **INSTALL INSTRUCTIONS**

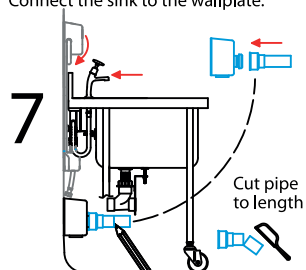
Do not fit drain kit until wallplate and sink bracket have been installed.

6. Apply jointing compound/ tape tighten drain tee onto sink boss so that outlet faces rear of sink.



Tighten buffer against underside of bowl
Lock in place.

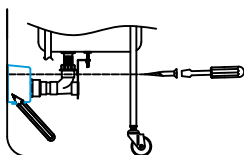
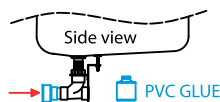
7 Push tapered pipe into drain fitting as far as it will go. Connect the sink to the wallplate.



Offer drain fitting against wall.
Mark cut length - allow for socket.

8

8 Glue tapered pipe into tee, with shield end facing wall.
Connect sink back to wallplate.
Mark drain fitting fixing holes and fix to wall.

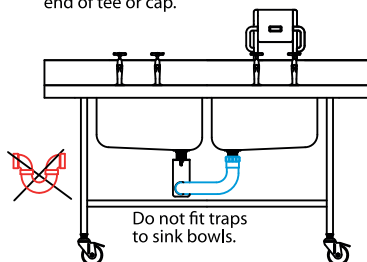


Rotate fitting to suit site drain.

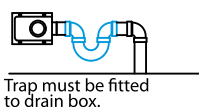


9

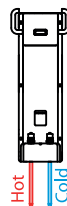
9 Interconnect drains into open end of tee or cap.



Water / drain connections



Trap must be fitted to drain box.



Ensure all pipework is flushed clear of debris. Service valves should be fitted to supplies. Max. recommended water pressure 3 bar (44psi) Earth bonding connection required. Installation must comply with local authority requirements.

manufactured by **MECHLINE**

MECHLINE DEVELOPMENTS LIMITED | Telephone: +44 (0)1908 261511 | Email: info@mechline.com | Web: www.mechline.com