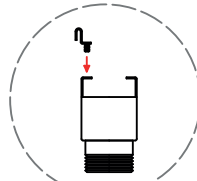
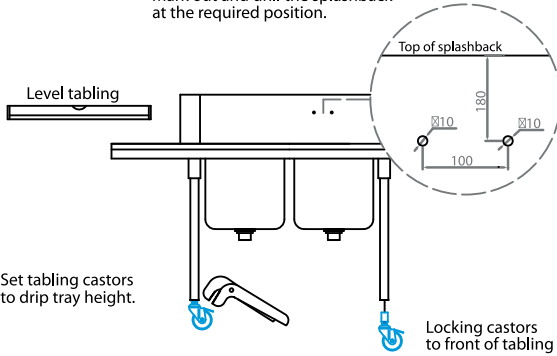


# QUICKLINK

# QuickLink D / Series 4 INSTALL INSTRUCTIONS

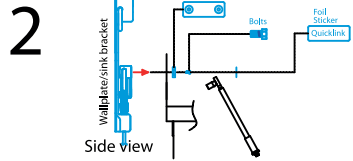
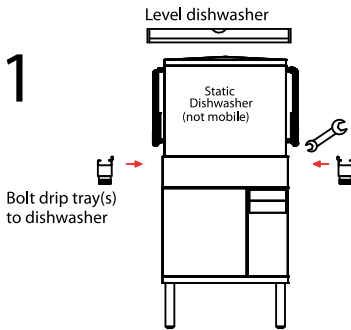
Mark out and drill the splashback at the required position.



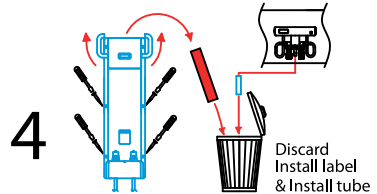
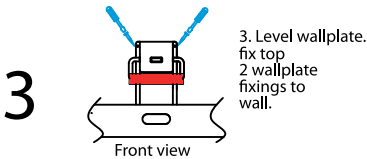
Bolt fixing bracket(s) to drip trays

Set tabling castors to drip tray height.

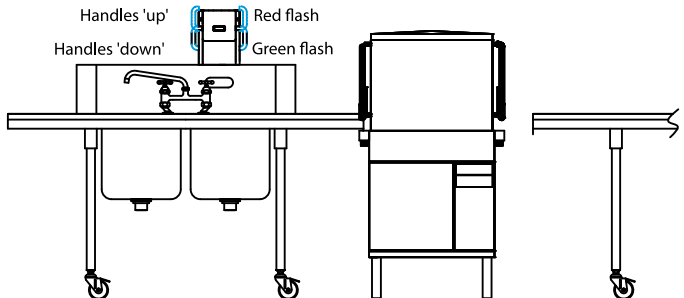
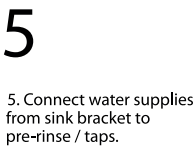
Locking castors to front of tabling



2. Bolt wallplate / sink bracket to rear of splashback using fixing block supplied.



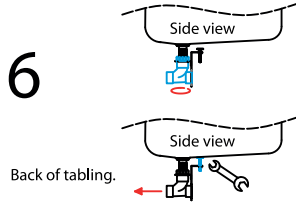
4. Disconnect the wallplate. Remove tabling and fix wallplate securely to wall.



# QuickLink D Drain Kit **INSTALL INSTRUCTIONS**

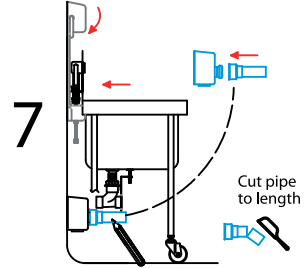
Do not fit drain kit until wallplate and sink bracket have been installed.

6. Apply jointing compound/ tape tighten drain tee onto sink boss so that outlet faces rear of tabling.



Tighten buffer against underside of bowl  
Lock in place.

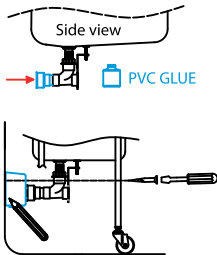
7 Push tapered pipe into drain fitting as far as it will go. Connect the tabling to the wallplate.



Offer drain fitting against wall.  
Mark cut length - allow for socket.

## 8

8 Glue tapered pipe into tee, with shield end facing wall.  
Connect tabling back to wallplate.  
Mark drain fitting fixing holes and fix to wall.

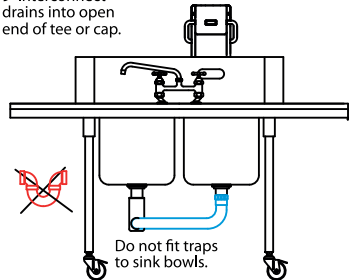


Rotate fitting to suit site drain.

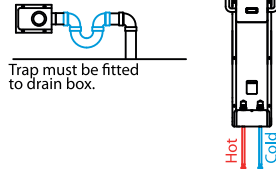


## 9

9 Interconnect drains into open end of tee or cap.



Water / drain connections



Trap must be fitted to drain box.

Ensure all pipework is flushed clear of debris. Service valves should be fitted to supplies. Max. recommended water pressure 3 bar (44psi) Earth bonding connection required. Installation must comply with local authority requirements.

manufactured by **MECHLINE**

MECHLINE DEVELOPMENTS LIMITED | Telephone: +44 (0)1908 261511 | Email: info@mechline.com | Web: www.mechline.com

11/2021 (QL0003)