

FOOD WASTE STRAINER

FWS500/600 - FITTING INSTRUCTIONS

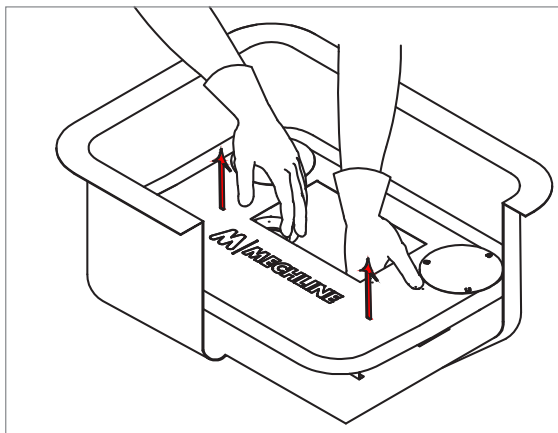
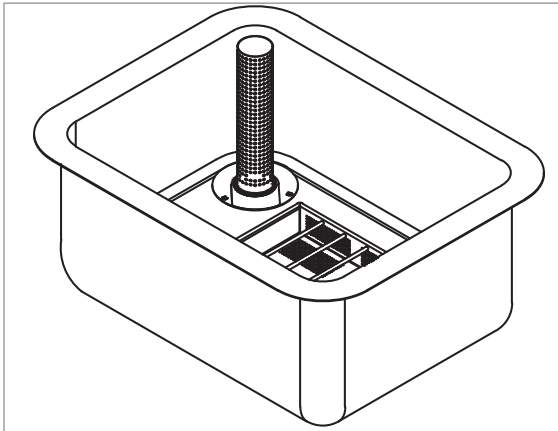


Thank you for purchasing the Mechline Food Waste Strainer.

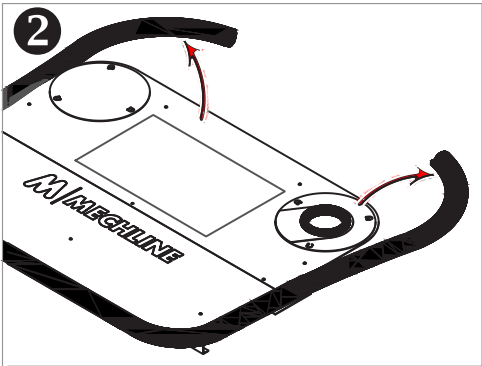
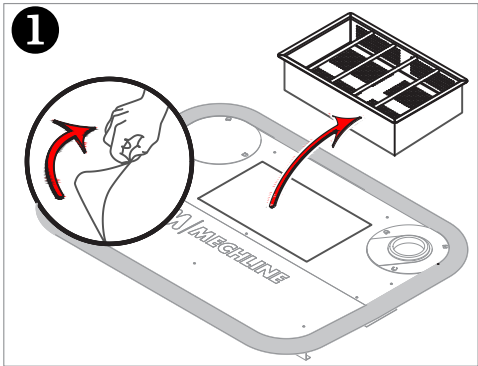
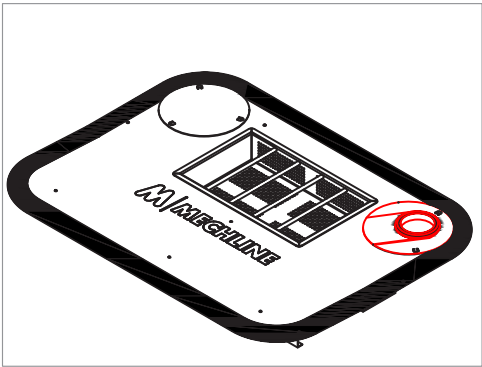
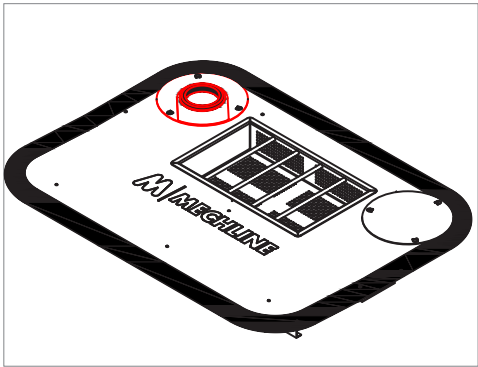
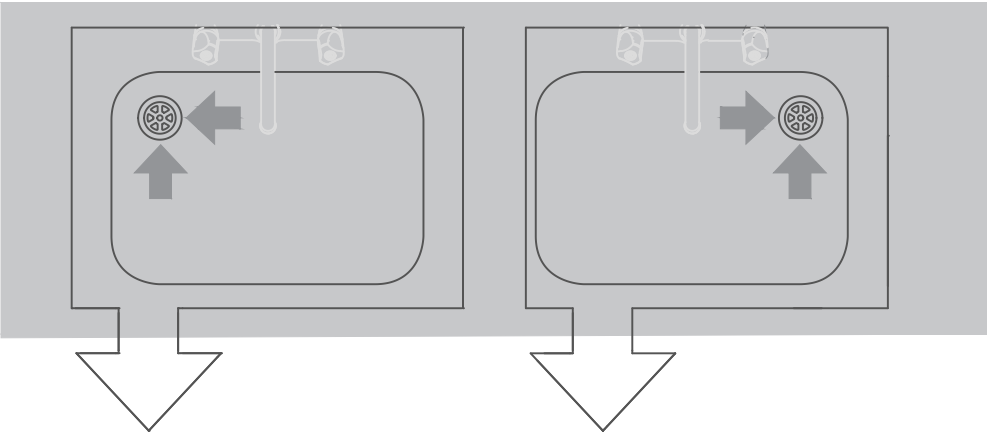
- Made from durable 1mm, 304 stainless steel, with removable food waste basket.
- The set-up takes five minutes for either left, or right handed sink bowls.
- **FWS500:** To fit sink bowls between 480-510mm and 380-410mm.
- **FWS600:** To fit sink bowls between 580-610mm and 430-460mm.
- Upstand strainer, if purchased from Mechline, will fit a standard 1½" (40mm) waste.

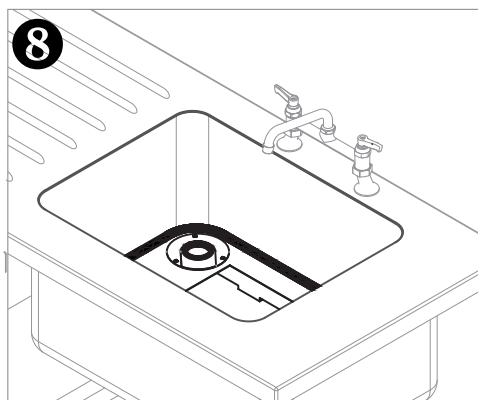
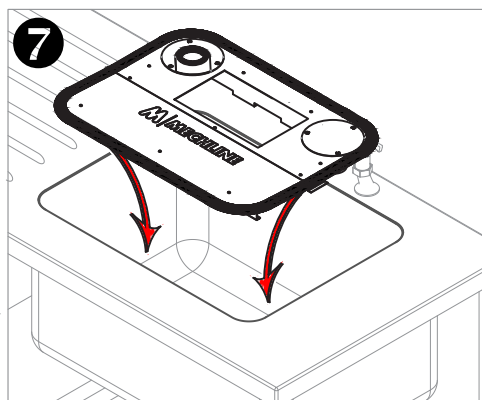
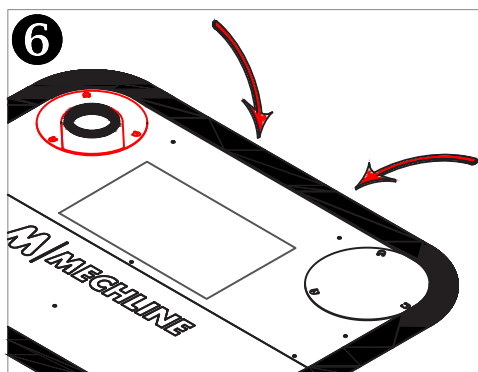
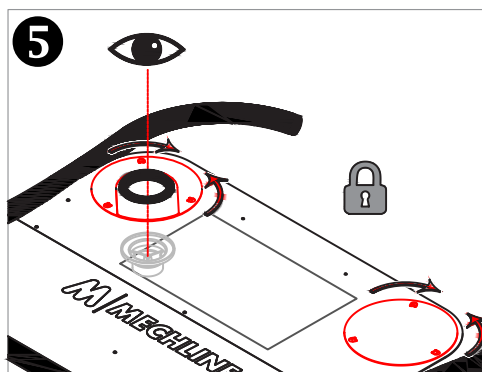
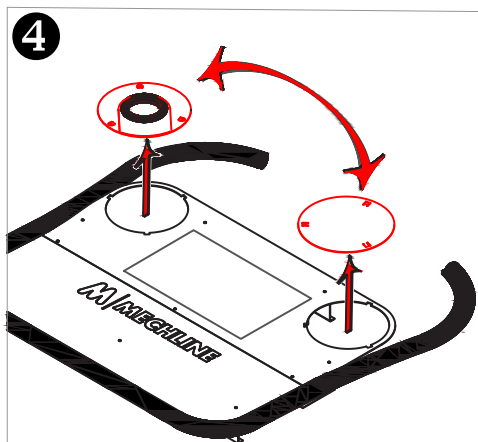
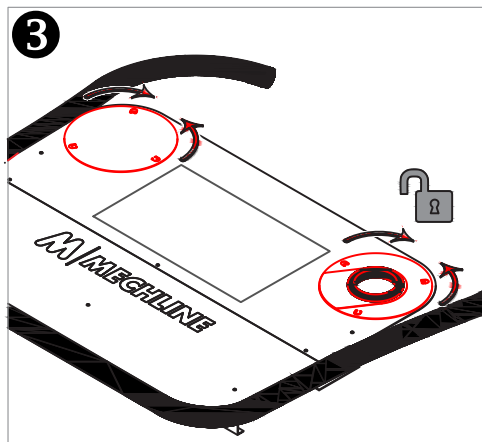
IMPORTANT NOTES:

- For strainer to work efficiently, an upstand strainer must be used.
- The upstand strainer must be lower than the sink's brim.
- It is imperative the food waste strainer sits in the bottom of the sink.
- The Food Waste Strainer must be installed in compliance with the supplied instructions.
- We recommend the Food Waste Strainer is cleaned in the dishwasher at the end of each shift.
- Take care before and during installation and when removing the Food Waste Strainer for cleaning, moving metal parts involved!



continued...





continued...

