



MOBILE HAND WASH STATIONS

BASIX

The all new space-saving, mobile hands-free basin range.

Helps operations meet their requirements to provide hand-wash facilities for staff and customers on site—even in the smallest of areas.



OTHER BENEFITS

Manufactured in the UK with ease of use and water saving in mind.

Optional extras include **soap/sanitiser dispenser**, hanging **bin** and **towel dispenser**.

Hands-free technology improves health and safety, by removing the need for manual contact and **preventing the spread of germs by hand**.



Water saving spout

Models are hands-free operated with a water saving spray pattern spout. Complete your station by adding an optional soap/sanitiser dispenser, as pictured below.



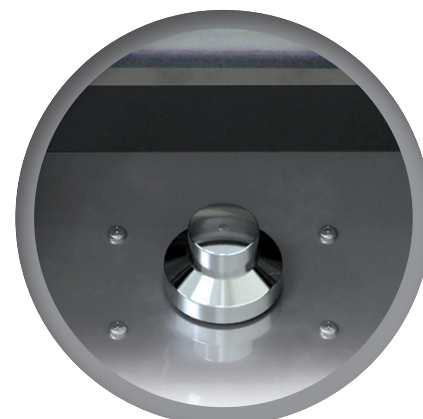
Improve hygiene

Hand-washing is the number one prevention against the spread of viruses, bacteria and other pathogens. Good hand-washing habits can be encouraged with the right equipment installed in the correct position.



Ease of use

The reliable, easy to use time flow foot valve operated models allow mixed water to run for 8-12 seconds before automatically shutting-off. A feature that can also help to reduce unnecessary water wastage.





MODELS:

BSX-MHB-HCW-T



BASIX MOBILE HAND WASH STATIONS

Manufacturer: Mechline Developments Limited

Designed to help operations meet their requirements to provide hand-wash facilities for staff and customers on site.

The **BSX-MHB-HCW-T** model is ideal for areas where a hot and cold water supply and waste connection are present.

FEATURES & BENEFITS

- UK manufactured
- **Time flow foot valve operated**
- **Thermostatic mixer valve supplied**
- Large foot void of 245 x 180mm - for ease of operation
- **Spout fitted with water-saving diffuser**
- Low flow rate of 0.6lpm with water-saving diffuser as supplied (tested at 3 bar pressure)
- An extremely small footprint of only 384 x 360mm
- High grade polished 304 stainless steel for the bowl and corrosion resistant 430 for the main body
- Reinforced, heavy-duty stainless steel foot plate
- Splashback - to protect walls from water splashes
- Front hinged door, with ¼ turn thumb latch, to access services and supplied internal lower storage shelf
- 2x castors and splashback grab handle allows simple transportation
- Castors can be removed to allow flush to wall fitting if desired



SITE REQUIREMENTS

Hot and cold water (*min. 1.5 bar*) and waste connection (*1 ¼ inch*)

WEIGHT

15.6 kg (*without optional soap dispenser*)

FURTHER OPTIONS

- Soap/sanitiser dispenser - model: BSX-SPD
- Hanging towel dispenser - model: BSX-MHB-TD and bin - model: BSX-MHB-WB



OTHER MODELS

Model: BSX-MHB-HCW - As above, but with a manual mixer valve.

Model: BSX-MHB-X - Ideal for areas where no water supply, waste or electric are present. **NB: COLD water operation only via stored containers.**

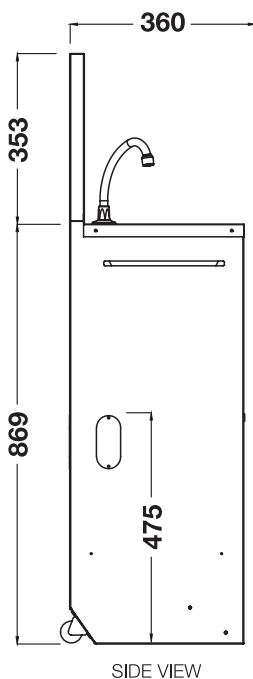
MORE MODEL VARIANTS AVAILABLE SOON

WARRANTY

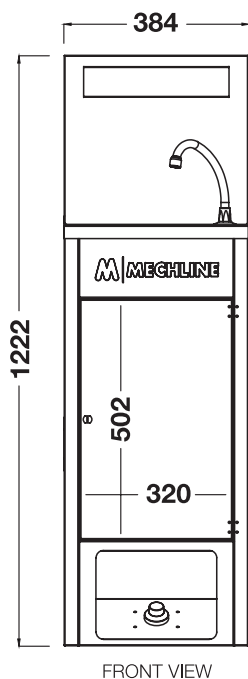
One-year manufacturer's warranty from the date of invoice, against defective parts or faulty workmanship. *Terms and conditions apply*

TECHNICAL ASSISTANCE

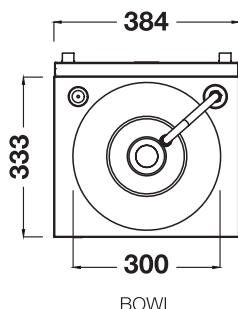
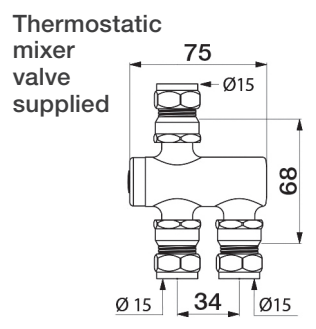
Call +44 (0)1908 261511 - option 2 for the Technical Helpdesk or e-mail technical@mechline.com



SIDE VIEW



FRONT VIEW



BOWL

