



MODEL:

Delabie DLB-5128T8

DELABIE



Delabie 1 1/2-inch mechanical mixer for sinks and troughs with lever control and swivelling spout

Accreditation: WRAS

Connection(s): 1/2-inch

Controls: Lever

Mount: Deck mounted

Pedestal: Single Hole

Spout: Swivel

Tap Type: Monobloc Mixer

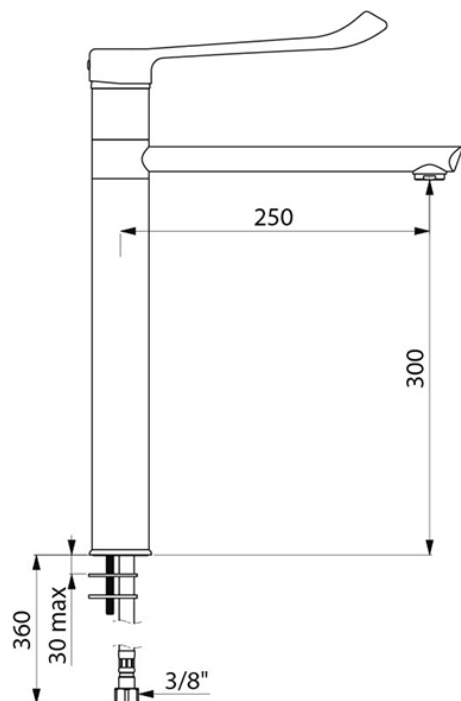
Water Feed: Twin

FEATURES & BENEFITS

- Mechanical mixer for sinks and troughs with swivelling spout H. 300mm L. 250mm.
- High spout with hygienic flow straightener suitable for fitting a BIOFIL terminal filter.
- Body and spout with smooth interiors (reduced bacterial development).
- Chrome-plated body, base and spout.
- Flow rate limited to 9 lpm at 3 bar.
- Hygiene control lever L. 215mm requires no manual contact.
- Supplied with braided stainless steel PEX flexibles F 1/2-inch.
- Reinforced fixings by 2 stainless steel rods and back-nuts.

TECHNICAL INFO

- Connection(s): F 1/2-inch.
- Height: 439mm.
- Drop height: 300mm.
- Spout length: 250mm.
- Flow rate: 9 lpm.



Dimensions are in millimeters. If a Cad file is required please visit www.mechline.com.



MECHLINE DEVELOPMENTS LIMITED

Tel: +44 (0)1908 261511 | Email: info@mechline.com | Web: www.mechline.com