

MODEL: **BaSix WS4-TX-i-200-WNT**

# BASIX



BaSix Hand Wash Station. Hands-Free Operated with AquaTechnix TX-i-200 Electronic Sensor Tap. Includes microvalve, battery pack, 4x standard AA batteries, PEX lined WRAS-approved water hose, WNT-MIX thermostatic mixer & tap hole stopper

**Basin Range:** WS4

**Controls:** Hands-Free

**Controls:** Hands-free ' Battery Operated'

**Spout:** Fixed Spout

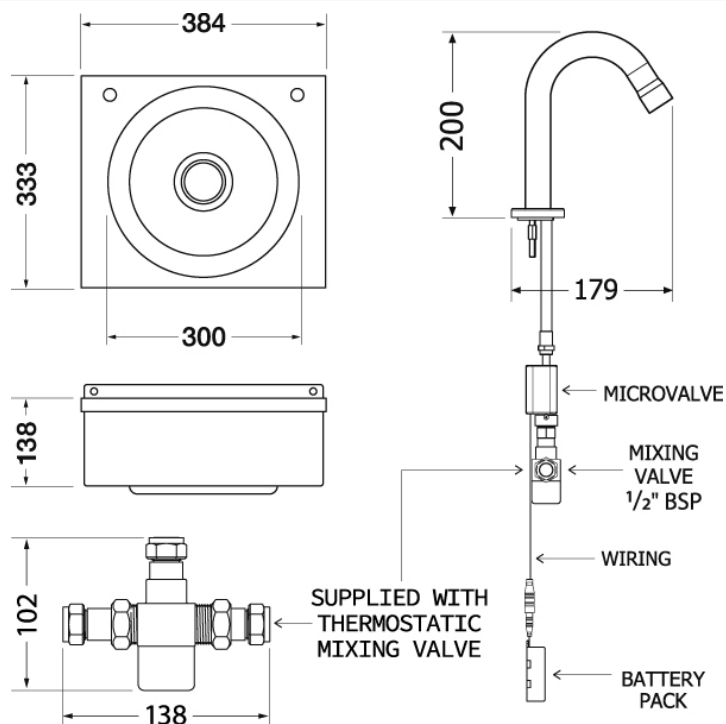
**Tap Type:** TX-i

### FEATURES & BENEFITS

- Range of hygienic hand washing solutions
- Helps operations meet their requirement to provide hand-washing stations on site
- Good and safe habits are more easily followed and enforced
- Supreme water-savings and huge hygiene benefits with the AquaTechnix TX-i Sensor Tap

### TECHNICAL INFO

- Dimensions: O/D: 384 x 333 x 138 Bowl: 300 dia x 138mm deep
- Flow rate range: Between 3.78 LPM (0.063 LPS) and 8 LPM (0.133 LPS) pressure dependent
- Basin material: 304 Stainless Steel
- Basin weight: 2.33kg
- One and one quarter inch waste fitting supplied
- Supplied with thermostatic mixing valve for hot & cold supplies with integrally fitted check valves
- Tap used on this basin are TX-i-200



Dimensions are in millimeters. If a Cad file is required please visit [www.mechline.com](http://www.mechline.com).



MECHLINE DEVELOPMENTS LIMITED

Tel: +44 (0)1908 261511 | Email: [info@mechline.com](mailto:info@mechline.com) | Web: [www.mechline.com](http://www.mechline.com)